



16:9

The Sovereign Household

FRONTIERS OF OFF-GRID AUTONOMY & ATOMIC ECONOMICS

A BRIEFING ON STRUCTURAL SHIFTS // YHAUZ

+ Not a Lifestyle.

Reject the hype. This is not about tiny homes, minimalism, or ideology. It is a structural shift in how households are formed and sustained.

THE OLD MODEL

Housing as a Service Subscription.

- Vulnerable to rate hikes.
- Exposure to fees.
- Capacity constraints.

+ A Structural Shift.

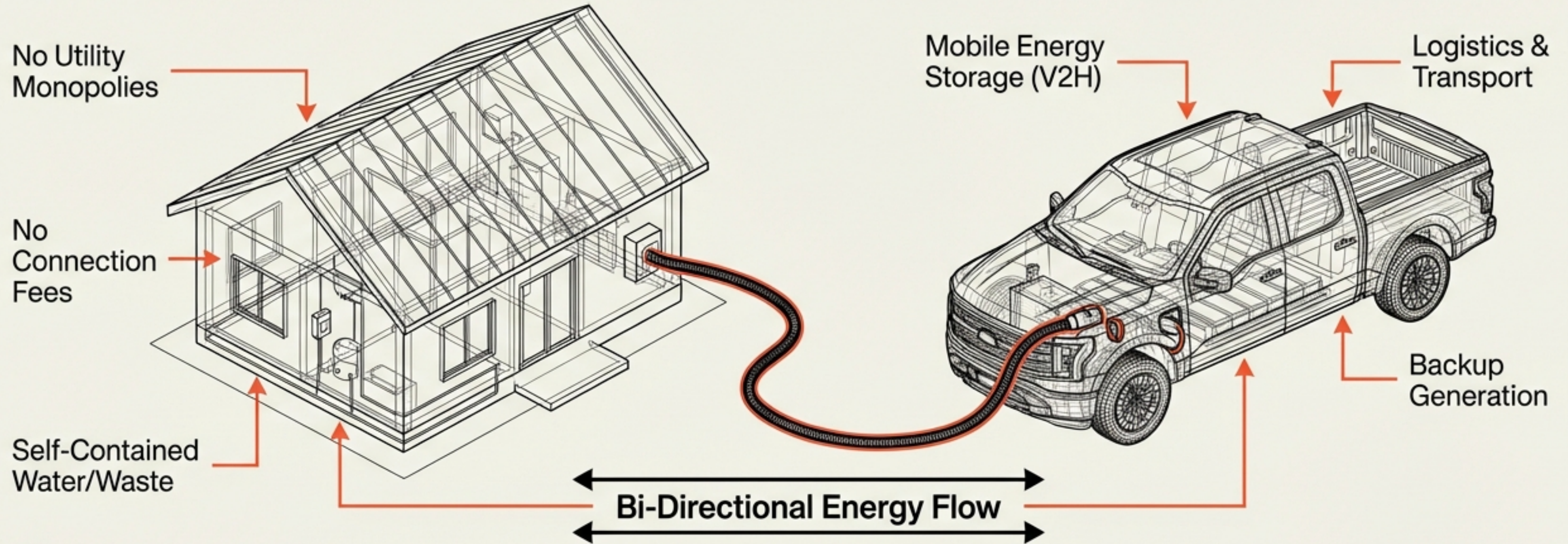
We are converting housing from a Service to a Product.

THE NEW MODEL

Housing as a **Self-Contained System.**

- Zero exposure to external rate hikes.
- Time risk eliminated.

The Minimum Viable Frontier Stack



Crucial Insight: The EV truck is not transport—it is the second half of the infrastructure. Together, they form a closed-loop system.

Removing the Monopolies

Without off-grid capability, mobility is cosmetic.



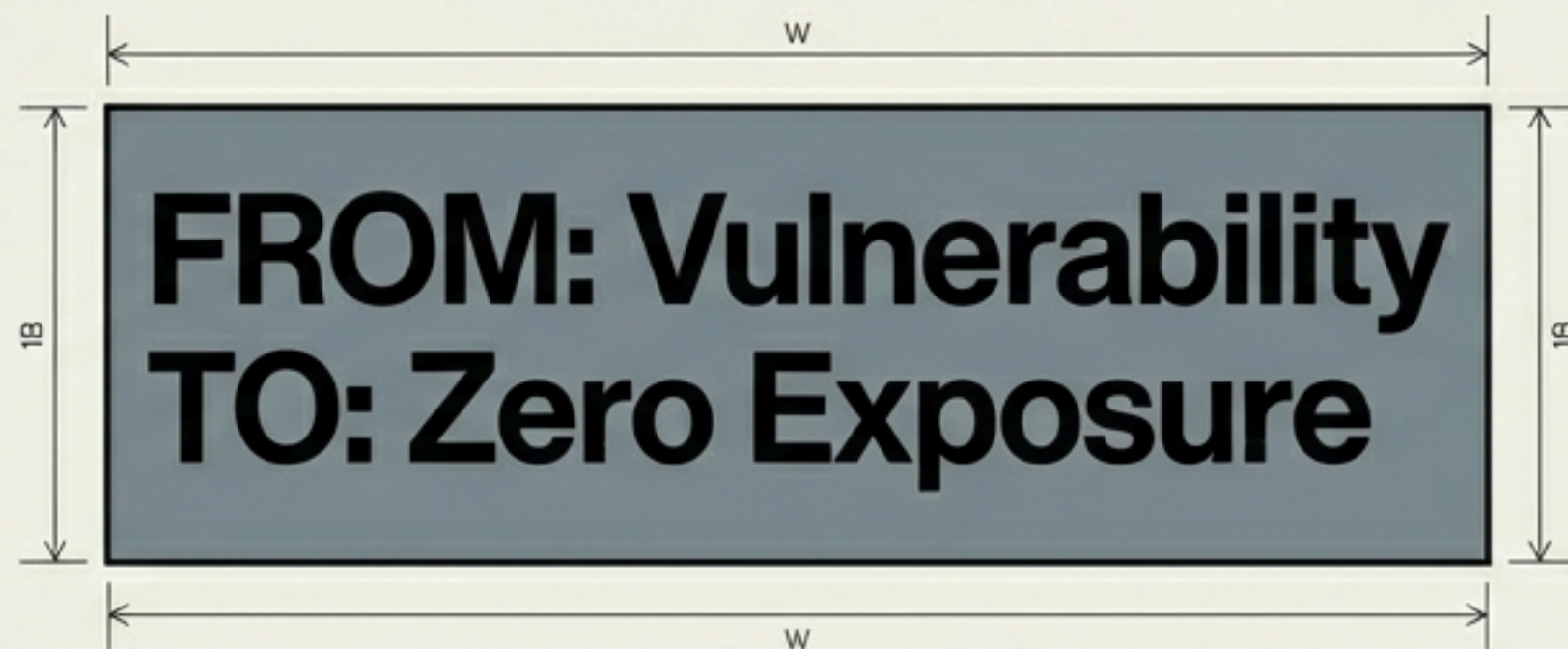
No dependency on utility monopolies.



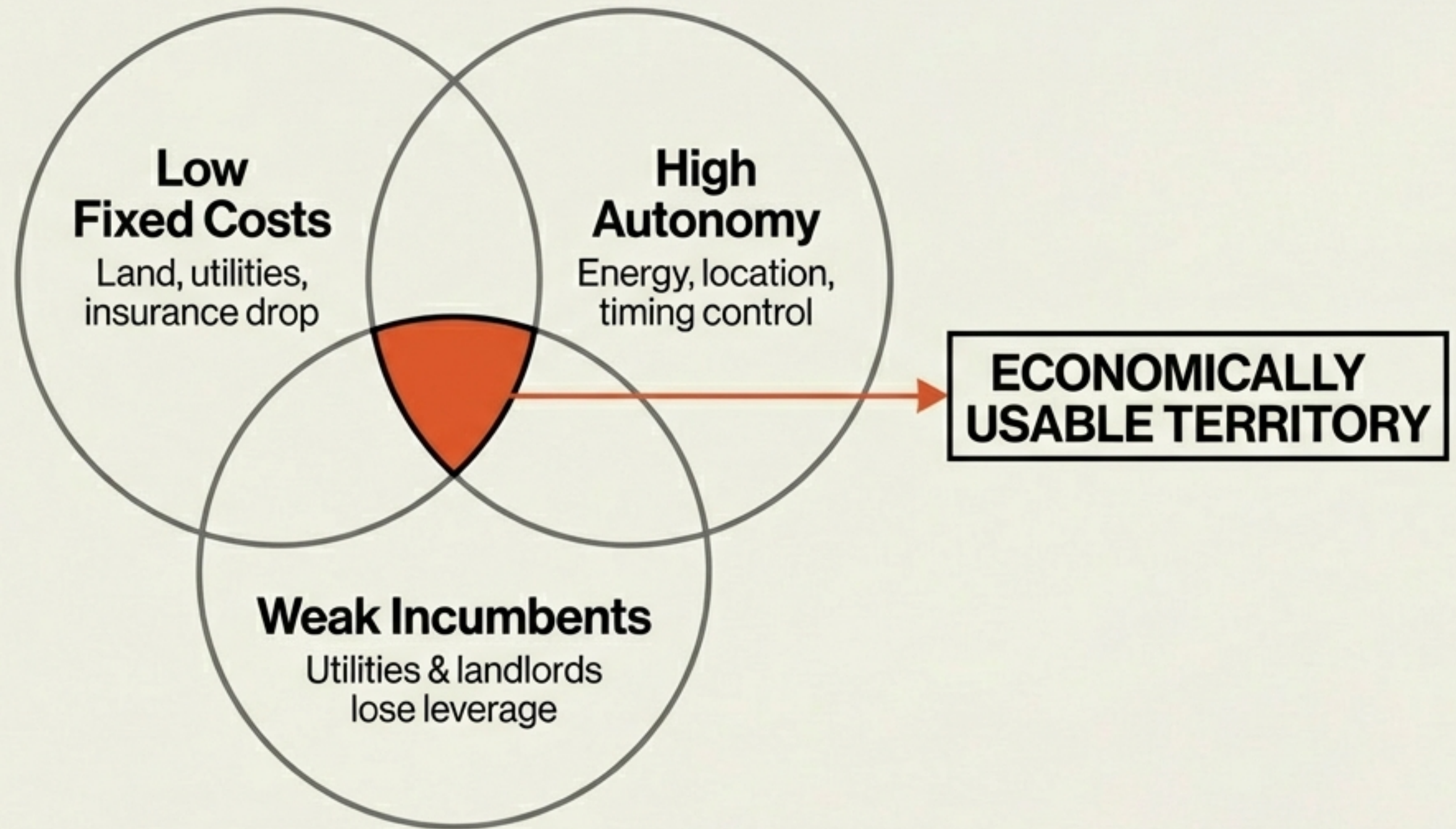
No exposure to escalating electricity or connection fees.



No time risk from grid upgrades or capacity constraints.

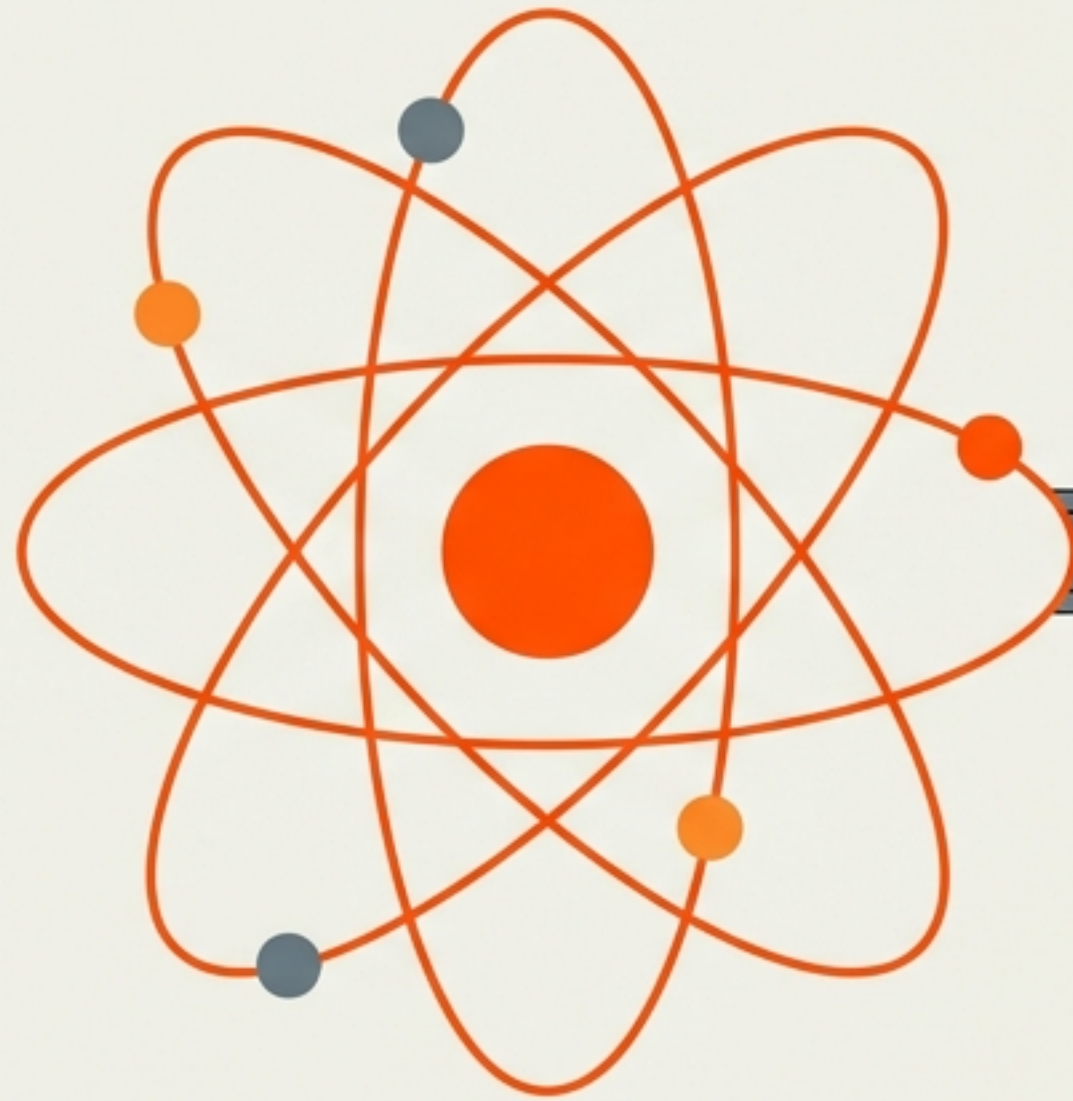


The Definition of a “Frontier”



A frontier exists when these three forces align.

Changing the Economy, One Household at a Time



1. The household is the atomic unit where labor income converts to assets.
2. Currently, services act as recurring cost sinks.
3. YHauz intervenes at this atomic level to change the cost curve.

“One house at a time is not symbolic—it is atomic.”

Manufacturing vs. Services

An anti-inflationary force.

TRADITIONAL (Housing as Service)

Bespoke local service

Regulatory opacity

High price dispersion

Inflationary by nature

YHAUZ (Housing as Product)

Manufactured system

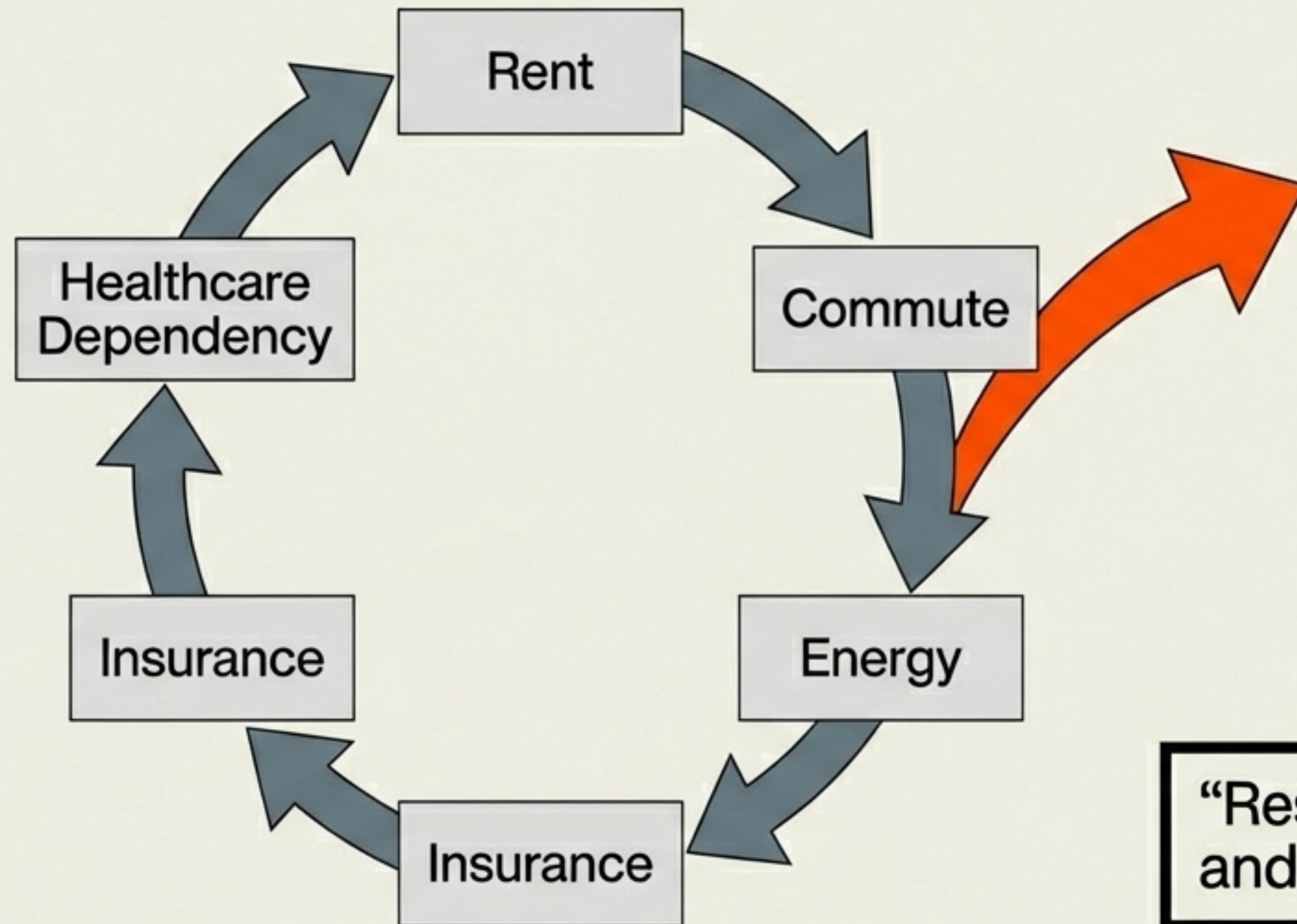
Standardized engineering
& compliance

Fungible product

Collapses price dispersion

Exit, Not Protest

THE URBAN RENT LOOP



THE EXIT (YHAUZ)

Exurban Siting
(Lower Land Cost)
Shrinking Monopoly
Exposure

“Restores independence without isolation,
and mobility without precarity.”

Raising Real Wages by Lowering Costs

$$\text{Nominal Wage (Unchanged)} - \text{Lower Cost of Living} = \text{HIGHER REAL WAGE}$$

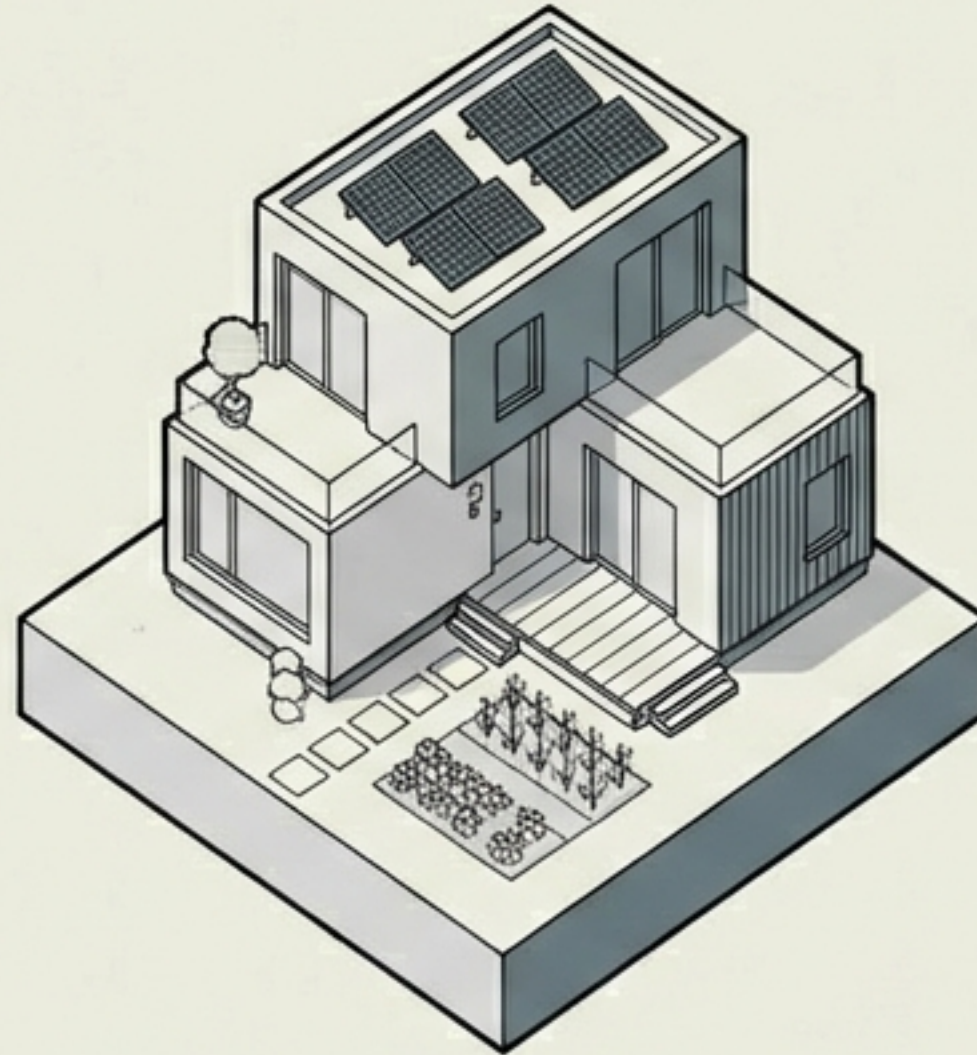
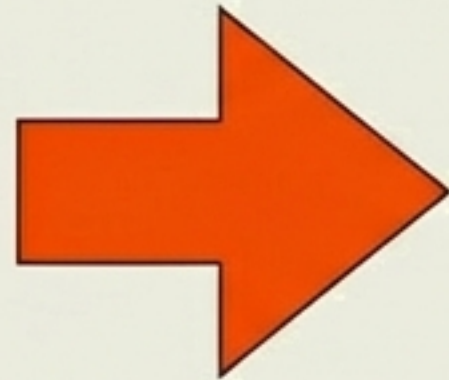


Economic expansion, not consumption.

The Household as a Micro-Balance Sheet



LABOR INPUT



- Hedge against service inflation
- Platform for extensions (energy, food, workspace)
- Capital formation outside legacy bottlenecks

PRODUCTIVE ASSET

- Platform for extensions (energy, food, workspace)
- Capital formation outside legacy bottlenecks

Markets Adapt Faster Than Politics

Why This Scales Economically First.

WHAT WE DON'T NEED

- National policy change
- Housing reform bills
- Subsidies
- Union fights

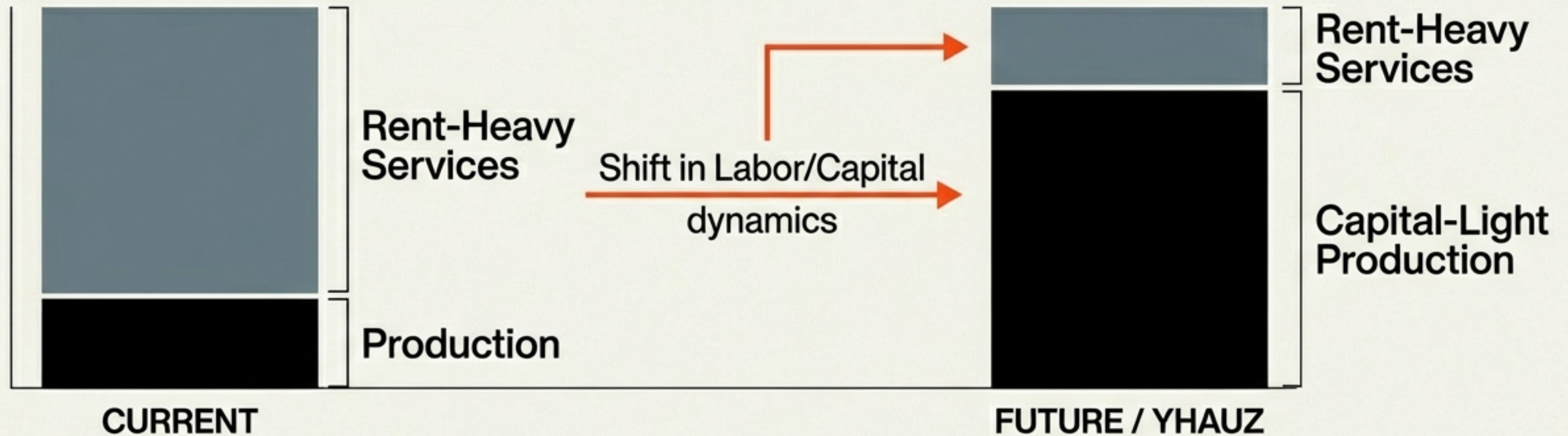
WHAT WE NEED

- Repeatable units
- Logistics discipline
- Predictable costs
- Alternative financing

The Competition: Rent extraction and local monopoly pricing—not builders.

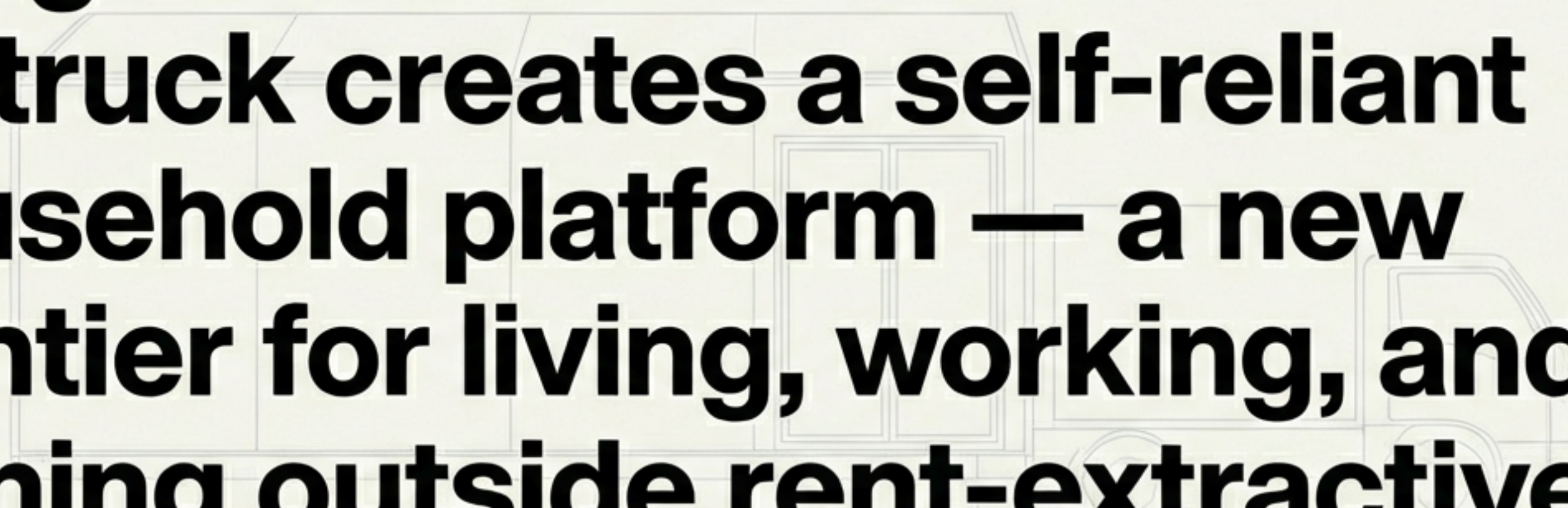
The Quiet Structural Change

GDP Composition



As adoption grows, wage pressure eases and the economy shifts toward production.

Conclusion: Structural change without confrontation.

A faint architectural line drawing of a modern house with large windows and a flat roof, with an electric vehicle (EV) truck parked in front of it. The drawing is positioned behind the main text.

Off-grid YHauz combined with an EV truck creates a self-reliant household platform — a new frontier for living, working, and owning outside rent-extractive systems.

Strategic Clarity

~~Selling: Tiny Homes, Off-grid Lifestyle, Sustainability~~

ENABLING:

- ✓ **HOUSEHOLD SOVEREIGNTY**
- ✓ **GEOGRAPHIC OPTIONALITY**
- ✓ **CAPITAL FORMATION**

Frontier economics—one household at a time.

Join the Frontier

You're not changing the economy abstractly. You're changing household economics—and that's where the leverage is.

Investment & Partnership Inquiry
contact@yhauz.frontier
www.yhauz.com

